

TRADITION AND INNOVATION – 169 YEARS OF KERN

Independent and family-run, KERN is already in its 6th generation and is synonymous with quality and reliability in customer service.

FAST

- 24 hours delivery service – order today, on its way tomorrow
- Sales & service hotline from 8:00 am to 6:00 pm

COMPETENT

- DKD accreditation (DIN EN ISO/IEC 17025)
- QM system (DIN EN ISO 9001:2008)
- Initial verification by the manufacturer (2009/23/ECC)
- Medical (DIN EN ISO 13485 & 93/42/EWG)

RELIABLE

- 2+ years warranty
- Precision in weighing technology for the last 169 years

DIVERSE

- One-stop shopping: from pocket balances through to floor scales – everything from one supplier
- Find the balance you want in no time with the „Balance Quick-Finder“



KERN – Professional measuring.

TEST WEIGHTS



BALANCES & TEST SERVICE – for laboratory, industry and food



GB

2013

15 Test weights

Weights yesterday and today

Weights have always been used to carry out weighing procedures. This original purpose has almost disappeared. Today, weights are used almost exclusively for adjusting and testing = calibration of electronic balances. We therefore call them „Test weights“ as this is their purpose of use.

Adjustment or calibration?

→ **Adjusting** a balance means that you are intervening in the weighing system, to make sure that the display is set to show the correct nominal value. With → **calibration**, on the other hand, there is no intervention, you are testing whether the display is correct and documenting any deviation.

Testing, doing it right!

The internationally valid OIML Directive R111-2004 classifies test weights hierarchically into accuracy classes, where E1 is the most accurate and M3 is the least accurate weight class. With KERN you get the whole test weight range in all OIML accuracy classes E1, E2, F1, F2, M1, M2, M3.

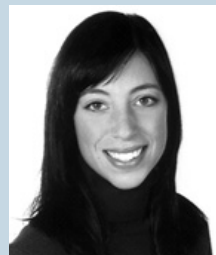
As the appropriate test weight is only classed as checking equipment to ISO 9000ff if it has the relevant proof of accuracy, all KERN test weights come with an appropriate DKD calibration certificate (optional). For further details, see the DKD calibration service section on page 153.

KERN offers you the appropriate test weight package for your balance, consisting of the test weight, box and → **DKD calibration** certificate, as proof of its accuracy ... the best pre-requisite for proper balance calibration.



Test weights: classes of accuracy E, F, M and their general relation to the types of balances:

- E2** the most accurate test weights for high resolution analytical balances of verification class I $\geq 100.000 e$
- F1** Test weights for analytical balances/ precision balances for verification class I/ II, $\leq 100,000 e$
- F2** Test weights for precision balances of verification class II, $\leq 30,000 e$
- M1** Test weights for industrial and commercial balances of verification class III, $\leq 10,000 e$



Your KERN product specialist will be happy to help:

Marietta Diener
Product specialist Test weights

→ See the glossary, page 158/159

Information about your KERN test weights

	Page
Selection of the appropriate test weight for your balance	134
OIML Directive for weights	135
Denomination table for weight sets	135

Test weights

KERN E1	Milligram weights, individual weights, weight sets	136
KERN E2	Milligram weights, individual weights, weight sets	137
KERN F1	Milligram weights, individual weights, weight sets	139
KERN F2	Milligram weights, individual weights, test weights, weight sets	143
KERN M1	Milligram weights, individual weights, test weights, weight sets	145
KERN M1	Hook weights, slotted weights, beam bars, rectangular weights, heavy duty weights	147
KERN M2	Individual weights, rectangular weights, weight sets	149
KERN M3	Individual weights, cylindrical weights, rectangular weights, weight sets	150
Accessories	Accessories, tweezers, custom-made special boxes, weight carrying cases, weight carriers	152

Selection of the appropriate test weight for your balance:

Correctly selected test weights with DKD calibration certificate are the pre-requisite for ensuring that your balances are not only correctly adjusted, but also correctly calibrated. Scheduled testing of your balances with such test weights helps to guarantee your quality requirements and to maintain your quality targets.

Here's how you find the right test weight for your balance:

A balance can never be more accurate than the test weight used to adjust it, it depends on its tolerance.

Accuracy of the test weight: Should correspond to the readout d of the balance, rather than something better.

Nominal weight value: This is shown in adjust mode „CAL“ in the balance display. Given the choice, the heaviest weight is the most suitable for accurate measurement.

Once accuracy and nominal weight value are specified, the suitable test weight is selected according to the tolerances „Tol“ of the individual accuracy classes E2-M3, see column „Tol \pm mg“ at the respective weight and table at page 135.

Example:

Balance with weighing range **Max** 2000 g = 2 kg and readout $d = 0,01$ g = 10 mg

- The accuracy of the required test weight is determined by readout d with approx. ± 10 mg.
- displayed weight size on „CAL“ mode: 1000 g or 2000 g. The required test weight has a 2 kg weight size.
- suitable test weights with ± 10 mg tolerance and 2 kg weight size, stand in accuracy class F1. KERN-No 327-72, see page 140.

Exception, analytical balances (readout $d \leq 0,1$ mg):

E1 test weights are recommended. Depending on the safety requirements, E2 test weights with a DKD calibration certificate will also be sufficient.

From brass to stainless steel - the right test weight for every situation



Test weight → Features ↓	Cylindrical shape with lifting knob, polished stainless steel	Compact shape with carrying grip, polished stainless steel	Cylindrical shape with lifting knob, polished stainless steel or nickel-plated and polished brass	Compact shape with carrying grip, finely turned stainless steel	Cylindrical shape with lifting knob, finely turned stainless steel	Cylindrical shape with lifting knob, finely turned brass
conforms to OIML R111	yes	yes	yes	no	yes	yes
Available classes	E1, E2	E2, F1	F1	adjusted to F1 error limit class	F2, M1	M1, M2, M3
Upper surface	polished	polished	polished	finely turned	finely turned	finely turned
Material	Stainless steel	Stainless steel	Stainless steel or nickel-plated brass	Stainless steel	Stainless steel	Brass
Adjusting cavity	no	no	yes	yes, from 20 g	yes, from 20 g	yes, from 20 g
Verification possible	yes	yes	yes	no	yes	yes, except M2
Checking equipment for verification purposes	approved	approved	approved	not approved	approved	approved
Ideal as checking equipment in QM systems (e.g. ISO 9000 ff)	yes	yes	yes	yes	yes	yes
Benefits	<ul style="list-style-type: none"> • High-quality test weight for analytical and precision balances • Highly-refined upper surface • Optimum shape of the top for good grip 	<ul style="list-style-type: none"> • Affordable test weight for analytical and precision balances • Highly-refined upper surface 	<ul style="list-style-type: none"> • Optimum, high-quality test weight for precision balances • Optimum shape of the top for good grip 	<ul style="list-style-type: none"> • Affordable test weight for in-house checking of precision balances 	<ul style="list-style-type: none"> • Optimum test weight for commercial and industrial scales • Optimum shape of the top for good grip 	<ul style="list-style-type: none"> • Affordable test weight for commercial and industrial scales • Optimum shape of the top for good grip

OIML Directive R111-2004 for weights

The key points from the OIML Directive R111-2004

OIML (Organisation Internationale de Metrologie Legale) has established the exact metrological requirements for weights in verified applications in approx. 100 states all over the world. The OIML recommendation R111 (2004 Edition) for weights relates to sizes 1 mg–50 kg. Statements are made on the accuracy, materials, geometric shape, marking and storage of the weights.

Error limits for weights of classes E1 to M3

The error limit classes are in fixed hierarchical levels in the proportion of 1:3, where E1 is the most accurate and M3 is the least accurate weight class. When testing weights with other weights, the correct test class is the next highest class.

Error limit classes (= tolerances)

The values given in the table below (tolerances ± ... mg) are the respective permitted fabrication tolerances. They are to be equal to the → *measuring uncertainty* of the weight, if no → *DKD calibration certificate* is available.

Conventional mass

The problem is the air buoyancy, which makes the weight appear lighter. In order to avoid this „distortion“ in daily use, all weights are adjusted to the unit specifications as given in R111, i.e. it is accepted that: material density of the weights is 8000 kg/m³, air density is 1.2 kg/m³ and measuring temperature is 20 °C.

KERN cylindrical test weights

Comply with OIML R111-2004 in all respects, without exception.

→ See the glossary, page 158/159

Nominal value ↓	OIML R111-2004 Maximum permissible errors for weights = permissible tolerances „Tol ± mg“						
	E1	E2	F1	F2	M1	M2	M3
1 mg	± 0.003 mg	± 0.006 mg	± 0.020 mg	± 0.06 mg	± 0.20 mg		
2 mg	± 0.003 mg	± 0.006 mg	± 0.020 mg	± 0.06 mg	± 0.20 mg		
5 mg	± 0.003 mg	± 0.006 mg	± 0.020 mg	± 0.06 mg	± 0.20 mg		
10 mg	± 0.003 mg	± 0.008 mg	± 0.025 mg	± 0.08 mg	± 0.25 mg		
20 mg	± 0.003 mg	± 0.010 mg	± 0.03 mg	± 0.10 mg	± 0.3 mg		
50 mg	± 0.004 mg	± 0.012 mg	± 0.04 mg	± 0.12 mg	± 0.4 mg		
100 mg	± 0.005 mg	± 0.016 mg	± 0.05 mg	± 0.16 mg	± 0.5 mg	± 1.6 mg	
200 mg	± 0.006 mg	± 0.020 mg	± 0.06 mg	± 0.20 mg	± 0.6 mg	± 2.0 mg	
500 mg	± 0.008 mg	± 0.025 mg	± 0.08 mg	± 0.25 mg	± 0.8 mg	± 2.5 mg	
1 g	± 0.010 mg	± 0.03 mg	± 0.10 mg	± 0.3 mg	± 1.0 mg	± 3.0 mg	± 10 mg
2 g	± 0.012 mg	± 0.04 mg	± 0.12 mg	± 0.4 mg	± 1.2 mg	± 4.0 mg	± 12 mg
5 g	± 0.016 mg	± 0.05 mg	± 0.16 mg	± 0.5 mg	± 1.6 mg	± 5.0 mg	± 16 mg
10 g	± 0.020 mg	± 0.06 mg	± 0.20 mg	± 0.6 mg	± 2.0 mg	± 6.0 mg	± 20 mg
20 g	± 0.025 mg	± 0.08 mg	± 0.25 mg	± 0.8 mg	± 2.5 mg	± 8.0 mg	± 25 mg
50 g	± 0.03 mg	± 0.10 mg	± 0.3 mg	± 1.0 mg	± 3.0 mg	± 10 mg	± 30 mg
100 g	± 0.05 mg	± 0.16 mg	± 0.5 mg	± 1.6 mg	± 5.0 mg	± 16 mg	± 50 mg
200 g	± 0.10 mg	± 0.3 mg	± 1.0 mg	± 3.0 mg	± 10 mg	± 30 mg	± 100 mg
500 g	± 0.25 mg	± 0.8 mg	± 2.5 mg	± 8.0 mg	± 25 mg	± 80 mg	± 250 mg
1 kg	± 0.5 mg	± 1.6 mg	± 5.0 mg	± 16 mg	± 50 mg	± 160 mg	± 500 mg
2 kg	± 1.0 mg	± 3.0 mg	± 10 mg	± 30 mg	± 100 mg	± 300 mg	± 1 000 mg
5 kg	± 2.5 mg	± 8.0 mg	± 25 mg	± 80 mg	± 250 mg	± 800 mg	± 2 500 mg
10 kg	± 5.0 mg	± 16 mg	± 50 mg	± 160 mg	± 500 mg	± 1 600 mg	± 5 000 mg
20 kg	± 10 mg	± 30 mg	± 100 mg	± 300 mg	± 1 000 mg	± 3 000 mg	± 10 g
50 kg	± 25 mg	± 80 mg	± 250 mg	± 800 mg	± 2 500 mg	± 8 000 mg	± 25 g
100 kg		± 160 mg	± 500 mg	± 1 600 mg	± 5 000 mg	± 16 g	± 50 g
200 kg		± 300 mg	± 1 000 mg	± 3 000 mg	± 10 g	± 30 g	± 100 g
500 kg		± 800 mg	± 2 500 mg	± 8 000 mg	± 25 g	± 80 g	± 250 g
1 000 kg		± 1 600 mg	± 5 000 mg	± 16 g	± 50 g	± 160 g	± 500 g
2 000 kg			± 10 g	± 30 g	± 100 g	± 300 g	± 1 000 g
5 000 kg			± 25 g	± 80 g	± 250 g	± 800 g	± 2 500 g

Denomination table, valid for all KERN weight sets from 1 mg

Individual weights per set	1	2	2	5	10	20	20	50	100	200	200	500	1 2 2 5 10 20 20 50 100 200 200 500 1 2 2 5 10															
Weight set	mg	mg	mg	mg	mg	mg	mg	mg	mg	mg	mg	mg	g	g	g	g	g	g	g	g	g	g	g	kg	kg	kg	kg	kg
1 mg - 500 mg	Total weight _____ 1,11 g																											
1 mg - 50 g														_____ 111,11 g														
1 mg - 100 g														_____ 211,11 g														
1 mg - 200 g														_____ 611,11 g														
1 mg - 500 g														_____ 1.111,11 g														
1 mg - 1 kg														_____ 2.111,11 g														
1 mg - 2 kg														_____ 6.111,11 g														
1 mg - 5 kg														_____ 11.111,11 g														
1 mg - 10 kg														_____ 21.111,11 g														

Test weights CLASS E1

Milligram weights, wire shape, stainless steel

• Test weight material: Stainless steel

• Container material: Wood



Milligram weight			+	Box	+	DKD certificate	=	Package price
KERN		Tol ±mg		KERN		KERN		KERN
308-31	1 mg	0,003		338-090-200		962-251		308-311-600
308-32	2 mg	0,003		338-090-200		962-252		308-321-600
308-33	5 mg	0,003		338-090-200		962-253		308-331-600
308-34	10 mg	0,003		338-090-200		962-254		308-341-600
308-35	20 mg	0,003		338-090-200		962-255		308-351-600
308-36	50 mg	0,004		338-090-200		962-256		308-361-600
308-37	100 mg	0,005		338-090-200		962-257		308-371-600
308-38	200 mg	0,006		338-090-200		962-258		308-381-600
308-39	500 mg	0,008		338-090-200		962-259		308-391-600

Individual weights, cylindrical, polished stainless steel

• Test weight material: Polished stainless steel

• Container material: Lined wood



Individual weight			+	Box	+	DKD certificate Initial calibration	=	Package price	DKD certificate Recalibration
KERN		Tol ±mg		KERN		KERN		KERN	KERN
307-01	1 g	0,010		317-010-100		963-231		307-011-610	962-231
307-02	2 g	0,012		317-020-100		963-232		307-021-610	962-232
307-03	5 g	0,016		317-030-100		963-233		307-031-610	962-233
307-04	10 g	0,020		317-040-100		963-234		307-041-610	962-234
307-05	20 g	0,025		317-050-100		963-235		307-051-610	962-235
307-06	50 g	0,030		317-060-100		963-236		307-061-610	962-236
307-07	100 g	0,05		317-070-100		963-237		307-071-610	962-237
307-08	200 g	0,10		317-080-100		963-238		307-081-610	962-238
307-09	500 g	0,25		317-090-100		963-239		307-091-610	962-239
307-11	1 kg	0,5		317-110-100		963-241		307-111-610	962-241
307-12	2 kg	1,0		317-120-100		963-242		307-121-610	962-242
307-13	5 kg	2,5		317-130-100		963-243		307-131-610	962-243
307-14	10 kg	5,0		317-140-100		963-244		307-141-610	962-244
307-15	20 kg	10,0		317-150-100		963-245		307-151-610	962-245
307-16	50 kg	25,0		317-160-100		963-246		307-161-610	962-246

For E1 weights >1g at the point of initial calibration, a volume determination will be carried out in accordance with OIML R111. When recalibrating, this is not required.

Weight sets, cylindrical shape, polished stainless steel

• Test weight material: Polished stainless steel

• Container material: Lined wood



Weight set		+	DKD certificate Initial calibration	=	Package price	DKD certificate Recalibration
KERN			KERN		KERN	KERN
308-42	1 mg - 500 mg		962-250		308-421-600	962-250
303-02	1 mg - 50 g		963-201		303-021-610	962-201
303-03	1 mg - 100 g		963-202		303-031-610	962-202
303-04	1 mg - 200 g		963-203		303-041-610	962-203
303-05	1 mg - 500 g		963-204		303-051-610	962-204
303-06	1 mg - 1 kg		963-205		303-061-610	962-205
303-07	1 mg - 2 kg		963-206		303-071-610	962-206
303-08	1 mg - 5 kg		963-207		303-081-610	962-207
303-09	1 mg - 10 kg		963-208		303-091-610	962-208
304-02	1 g - 50 g		963-215		304-021-610	962-215
304-03	1 g - 100 g		963-216		304-031-610	962-216
304-04	1 g - 200 g		963-217		304-041-610	962-217
304-05	1 g - 500 g		963-218		304-051-610	962-218
304-06	1 g - 1 kg		963-219		304-061-610	962-219
304-07	1 g - 2 kg		963-220		304-071-610	962-220
304-08	1 g - 5 kg		963-221		304-081-610	962-221
304-09	1 g - 10 kg		963-222		304-091-610	962-222

Test weights CLASS E2

Milligram weights, flat polygonal sheet, aluminium/German silver

- Test weight material: Aluminium 1 mg - 5 mg / German silver 10 mg - 500 mg
- Container material: Lined plastic



Milligram weight			+	Container		+	DKD certificate		=	Package price	
KERN		Tol ±mg		KERN			KERN			KERN	
318-01	1 mg	0,006		347-009-400			962-351			318-014-600	
318-02	2 mg	0,006		347-009-400			962-352			318-024-600	
318-03	5 mg	0,006		347-009-400			962-353			318-034-600	
318-04	10 mg	0,008		347-009-400			962-354			318-044-600	
318-05	20 mg	0,010		347-009-400			962-355			318-054-600	
318-06	50 mg	0,012		347-009-400			962-356			318-064-600	
318-07	100 mg	0,016		347-009-400			962-357			318-074-600	
318-08	200 mg	0,020		347-009-400			962-358			318-084-600	
318-09	500 mg	0,025		347-009-400			962-359			318-094-600	

Individual weights, compact shape, polished stainless steel

- Test weight material: Polished stainless steel
- Container material: Lined plastic



Individual weight			+	Container		+	DKD certificate		=	Package price	
KERN		Tol ±mg		KERN			KERN			KERN	
316-01	1 g	0,03		317-020-400			962-331			316-014-600	
316-02	2 g	0,04		317-020-400			962-332			316-024-600	
316-03	5 g	0,05		317-030-400			962-333			316-034-600	
316-04	10 g	0,06		317-040-400			962-334			316-044-600	
316-05	20 g	0,08		317-050-400			962-335			316-054-600	
316-06	50 g	0,10		317-060-400			962-336			316-064-600	
316-07	100 g	0,16		317-070-400			962-337			316-074-600	
316-08	200 g	0,30		317-080-400			962-338			316-084-600	
316-09	500 g	0,8		317-090-400			962-339			316-094-600	
316-11	1 kg	1,6		317-110-400			962-341			316-114-600	
316-12	2 kg	3,0		317-120-400			962-342			316-124-600	
316-13	5 kg	8,0		317-130-400			962-343			316-134-600	
316-14	10 kg	16,0		317-140-400			962-344			316-141-600	

Individual weights, cylindrical shape, polished stainless steel

- Test weight material: Polished stainless steel
- Container material: Lined plastic or wooden box (317-150-100 and 317-160-100)



Individual weight			+	Container		+	DKD certificate		=	Package price	
KERN		Tol ±mg		KERN			KERN			KERN	
317-01	1 g	0,03		317-020-400			962-331			317-011-600	
317-02	2 g	0,04		317-020-400			962-332			317-024-600	
317-03	5 g	0,05		317-030-400			962-333			317-034-600	
317-04	10 g	0,06		317-040-400			962-334			317-044-600	
317-05	20 g	0,08		317-050-400			962-335			317-054-600	
317-06	50 g	0,10		317-060-400			962-336			317-064-600	
317-07	100 g	0,16		317-070-400			962-337			317-074-600	
317-08	200 g	0,30		317-080-400			962-338			317-084-600	
317-09	500 g	0,8		317-090-400			962-339			317-094-600	
317-11	1 kg	1,6		317-110-400			962-341			317-114-600	
317-12	2 kg	3,0		317-120-400			962-342			317-124-600	
317-13	5 kg	8,0		317-130-400			962-343			317-134-600	
317-14	10 kg	16,0		317-140-400			962-344			317-141-600	
317-15	20 kg	30,0		317-150-100			962-345			317-151-600	
317-16	50 kg	80,0		317-160-100			962-346			317-161-600	

For individual weights, wooden boxes are also available as an alternative to the plastic containers.
For more details on this, please see page 151.

Test weights
CLASS E2

Weight sets, compact shape, polished stainless steel



- Test weight material: Polished stainless steel
- Case material: Lined plastic

Weight set		+		DKD certificate		=		Package price	
KERN				KERN				KERN	
312-024	1 g - 50 g			962-315				312-024-600	
312-034	1 g - 100 g			962-316				312-034-600	
312-044	1 g - 200 g			962-317				312-044-600	
312-054	1 g - 500 g			962-318				312-054-600	
312-064	1 g - 1 kg			962-319				312-064-600	
312-074	1 g - 2 kg			962-320				312-074-600	
312-084	1 g - 5 kg			962-321				312-084-600	

Weight sets, cylindrical shape, polished stainless steel



- Test weight material: Individual weights - polished stainless steel, milligram weights - aluminium/German silver
- Case material: Lined plastic. Milligram weights 1 mg - 500 mg in removable plastic box

Weight set		+		DKD certificate		=		Package price	
KERN				KERN				KERN	
318-22	1 mg - 500 mg			962-350				318-221-600	
313-024	1 mg - 50 g			962-301				313-024-600	
313-034	1 mg - 100 g			962-302				313-034-600	
313-044	1 mg - 200 g			962-303				313-044-600	
313-054	1 mg - 500 g			962-304				313-054-600	
313-064	1 mg - 1 kg			962-305				313-064-600	
313-074	1 mg - 2 kg			962-306				313-074-600	
313-084	1 mg - 5 kg			962-307				313-084-600	
314-024	1 g - 50 g			962-315				314-024-600	
314-034	1 g - 100 g			962-316				314-034-600	
314-044	1 g - 200 g			962-317				314-044-600	
314-054	1 g - 500 g			962-318				314-054-600	
314-064	1 g - 1 kg			962-319				314-064-600	
314-074	1 g - 2 kg			962-320				314-074-600	
314-084	1 g - 5 kg			962-321				314-084-600	

Weight sets, cylindrical shape, polished stainless steel



- Test weight material: Individual weights - polished stainless steel, milligram weights - aluminium/German silver
- Box material: Lined wood. Milligram weights 1 mg - 500 mg in removable plastic box

Weight set		+		DKD certificate		=		Package price	
KERN				KERN				KERN	
318-22	1 mg - 500 mg			962-350				318-221-600	
313-02	1 mg - 50 g			962-301				313-021-600	
313-03	1 mg - 100 g			962-302				313-031-600	
313-04	1 mg - 200 g			962-303				313-041-600	
313-05	1 mg - 500 g			962-304				313-051-600	
313-06	1 mg - 1 kg			962-305				313-061-600	
313-07	1 mg - 2 kg			962-306				313-071-600	
313-08	1 mg - 5 kg			962-307				313-081-600	
313-09	1 mg - 10 kg			962-308				313-091-600	
314-02	1 g - 50 g			962-315				314-021-600	
314-03	1 g - 100 g			962-316				314-031-600	
314-04	1 g - 200 g			962-317				314-041-600	
314-05	1 g - 500 g			962-318				314-051-600	
314-06	1 g - 1 kg			962-319				314-061-600	
314-07	1 g - 2 kg			962-320				314-071-600	
314-08	1 g - 5 kg			962-321				314-081-600	
314-09	1 g - 10 kg			962-322				314-091-600	

Test weights CLASS F1

Milligram weights, flat polygonal sheet, aluminium/German silver

- Test weight material: Aluminium 1 mg - 5 mg / German silver 10 mg - 500 mg
- Container material: Lined plastic



Milligram weight			+	Container		+	DKD certificate		=	Package price	
KERN		Tol ±mg		KERN			KERN			KERN	
328-01	1 mg	0,020		347-009-400			962-451			328-014-600	
328-02	2 mg	0,020		347-009-400			962-452			328-024-600	
328-03	5 mg	0,020		347-009-400			962-453			328-034-600	
328-04	10 mg	0,025		347-009-400			962-454			328-044-600	
328-05	20 mg	0,030		347-009-400			962-455			328-054-600	
328-06	50 mg	0,040		347-009-400			962-456			328-064-600	
328-07	100 mg	0,050		347-009-400			962-457			328-074-600	
328-08	200 mg	0,060		347-009-400			962-458			328-084-600	
328-09	500 mg	0,080		347-009-400			962-459			328-094-600	

Individual weights, compact shape, finely turned stainless steel

- Test weight material: Finely turned stainless steel
- Container material: Lined plastic
- Build type: Not in accordance with OIML R111, adjusted to error limit class F1



Individual weight			+	Container		+	DKD certificate		=	Package price	
KERN		Tol ±mg		KERN			KERN			KERN	
329-01	1 g	0,10		347-030-400			962-431N			329-014-600	
329-02	2 g	0,12		347-030-400			962-432N			329-024-600	
329-03	5 g	0,16		347-030-400			962-433N			329-034-600	
329-04	10 g	0,20		347-050-400			962-434N			329-044-600	
329-05	20 g	0,25		347-050-400			962-435N			329-054-600	
329-06	50 g	0,30		347-070-400			962-436N			329-064-600	
329-07	100 g	0,50		347-070-400			962-437N			329-074-600	
329-08	200 g	1		347-080-400			962-438N			329-084-600	
329-09	500 g	2,50		347-090-400			962-439N			329-094-600	
329-11	1 kg	5		347-110-400			962-441N			329-114-600	
329-12	2 kg	10		347-120-400			962-442N			329-124-600	
329-13	5 kg	25		347-130-400			962-443N			329-134-600	
329-14	10 kg	50		347-140-400			962-444N			329-144-600	

Individual weights, compact shape, polished stainless steel

- Test weight material: Polished stainless steel
- Container material: Lined plastic



Individual weight			+	Container		+	DKD certificate		=	Package price	
KERN		Tol ±mg		KERN			KERN			KERN	
326-01	1 g	0,10		347-030-400			962-431			326-014-600	
326-02	2 g	0,12		347-030-400			962-432			326-024-600	
326-03	5 g	0,16		347-030-400			962-433			326-034-600	
326-04	10 g	0,20		347-050-400			962-434			326-044-600	
326-05	20 g	0,25		347-050-400			962-435			326-054-600	
326-06	50 g	0,30		347-070-400			962-436			326-064-600	
326-07	100 g	0,50		347-070-400			962-437			326-074-600	
326-08	200 g	1		347-080-400			962-438			326-084-600	
326-09	500 g	2,50		347-090-400			962-439			326-094-600	
326-11	1 kg	5		347-110-400			962-441			326-114-600	
326-12	2 kg	10		347-120-400			962-442			326-124-600	
326-13	5 kg	25		347-130-400			962-443			326-134-600	
326-14	10 kg	50		347-140-400			962-444			326-144-600	

For individual weights, wooden boxes are also available as an alternative to the plastic containers.
For more details on this, please see page 151.

Test weights CLASS F1

Individual weights, cylindrical shape, nickel-plated and polished brass

- Test weight material: Nickel-plated and polished brass
- Container material: Lined plastic or lined wooden box (317-150-100 and 317-160-100)



Individual weight			+	Container		+	DKD certificate		=	Package price	
KERN		Tol ±mg		KERN			KERN			KERN	
327-61	1 g	0,10		347-030-400			962-431			327-614-600	
327-62	2 g	0,12		347-030-400			962-432			327-624-600	
327-63	5 g	0,16		347-030-400			962-433			327-634-600	
327-64	10 g	0,20		347-050-400			962-434			327-644-600	
327-65	20 g	0,25		347-050-400			962-435			327-654-600	
327-66	50 g	0,30		347-070-400			962-436			327-664-600	
327-67	100 g	0,50		347-070-400			962-437			327-674-600	
327-68	200 g	1		347-080-400			962-438			327-684-600	
327-69	500 g	2,50		347-090-400			962-439			327-694-600	
327-71	1 kg	5		347-110-400			962-441			327-714-600	
327-72	2 kg	10		347-120-400			962-442			327-724-600	
327-73	5 kg	25		347-130-400			962-443			327-734-600	
327-74	10 kg	50		347-140-400			962-444			327-744-600	
327-75	20 kg	100		317-150-100			962-445			327-751-600	
327-76	50 kg	250		317-160-100			962-446			327-761-600	

Individual weights, cylindrical shape, polished stainless steel

- Test weight material: Polished stainless steel
- Container material: Lined plastic or wooden box (317-150-100 and 317-160-100)



Individual weight			+	Container		+	DKD certificate		=	Package price	
KERN		Tol ±mg		KERN			KERN			KERN	
327-01	1 g	0,10		347-030-400			962-431			327-014-600	
327-02	2 g	0,12		347-030-400			962-432			327-024-600	
327-03	5 g	0,16		347-030-400			962-433			327-034-600	
327-04	10 g	0,20		347-050-400			962-434			327-044-600	
327-05	20 g	0,25		347-050-400			962-435			327-054-600	
327-06	50 g	0,30		347-070-400			962-436			327-064-600	
327-07	100 g	0,50		347-070-400			962-437			327-074-600	
327-08	200 g	1		347-080-400			962-438			327-084-600	
327-09	500 g	2,50		347-090-400			962-439			327-094-600	
327-11	1 kg	5		347-110-400			962-441			327-114-600	
327-12	2 kg	10		347-120-400			962-442			327-124-600	
327-13	5 kg	25		347-130-400			962-443			327-134-600	
327-14	10 kg	50		347-140-400			962-444			327-144-600	
327-15	20 kg	100		317-150-100			962-445			327-151-600	
327-16	50 kg	250		317-160-100			962-446			327-161-600	

Alternative to plastic container:

Wooden boxes for individual weights. For more details on this, please see page 151.



Test weights CLASS F1

Weight sets, compact shape, finely turned stainless steel



• Test weight material: Finely turned stainless steel

• Case material: Lined plastic

Weight set		DKD certificate		Package price	
Finely turned, Not in accordance with OIML R111, adjusted to error limit class F1		+		=	
KERN		KERN		KERN	
321-024	1 g - 50 g	962-415		321-024-600	
321-034	1 g - 100 g	962-416		321-034-600	
321-044	1 g - 200 g	962-417		321-044-600	
321-054	1 g - 500 g	962-418		321-054-600	
321-064	1 g - 1 kg	962-419		321-064-600	
321-074	1 g - 2 kg	962-420		321-074-600	
321-084	1 g - 5 kg	962-421		321-084-600	

Weight sets, compact shape, polished stainless steel



• Test weight material: Polished stainless steel

• Case material: Lined plastic

Weight set		DKD certificate		Package price	
		+		=	
KERN		KERN		KERN	
322-024	1 g - 50 g	962-415		322-024-600	
322-034	1 g - 100 g	962-416		322-034-600	
322-044	1 g - 200 g	962-417		322-044-600	
322-054	1 g - 500 g	962-418		322-054-600	
322-064	1 g - 1 kg	962-419		322-064-600	
322-074	1 g - 2 kg	962-420		322-074-600	
322-084	1 g - 5 kg	962-421		322-084-600	

Weight sets, cylindrical shape, polished and nickel-plated brass or polished stainless steel

- Test weight material: Individual weights - nickel-plated and polished brass or polished stainless steel, milligram weights - aluminium 1 mg - 5 mg/German silver 10 mg - 500 mg
- Case material: Lined plastic. Milligram weights 1 mg - 500 mg in removable plastic box



Weight set		DKD certificate		Package price	
		+		=	
KERN		KERN		KERN	
328-22	1 mg - 500 mg	962-450		328-221-600	
Nickel-plated and polished brass					
323-624	1 mg - 50 g	962-401		323-624-600	
323-634	1 mg - 100 g	962-402		323-634-600	
323-644	1 mg - 200 g	962-403		323-644-600	
323-654	1 mg - 500 g	962-404		323-654-600	
323-664	1 mg - 1 kg	962-405		323-664-600	
323-674	1 mg - 2 kg	962-406		323-674-600	
323-684	1 mg - 5 kg	962-407		323-684-600	
324-624	1 g - 50 g	962-415		324-624-600	
324-634	1 g - 100 g	962-416		324-634-600	
324-644	1 g - 200 g	962-417		324-644-600	
324-654	1 g - 500 g	962-418		324-654-600	
324-664	1 g - 1 kg	962-419		324-664-600	
324-674	1 g - 2 kg	962-420		324-674-600	
324-684	1 g - 5 kg	962-421		324-684-600	
Polished stainless steel					
323-024	1 mg - 50 g	962-401		323-024-600	
323-034	1 mg - 100 g	962-402		323-034-600	
323-044	1 mg - 200 g	962-403		323-044-600	
323-054	1 mg - 500 g	962-404		323-054-600	
323-064	1 mg - 1 kg	962-405		323-064-600	
323-074	1 mg - 2 kg	962-406		323-074-600	
323-084	1 mg - 5 kg	962-407		323-084-600	
324-024	1 g - 50 g	962-415		324-024-600	
324-034	1 g - 100 g	962-416		324-034-600	
324-044	1 g - 200 g	962-417		324-044-600	
324-054	1 g - 500 g	962-418		324-054-600	
324-064	1 g - 1 kg	962-419		324-064-600	
324-074	1 g - 2 kg	962-420		324-074-600	
324-084	1 g - 5 kg	962-421		324-084-600	

CLASS F1

Weight sets, cylindrical shape, polished and nickel-plated brass or polished stainless steel

- **Test weight material:** Individual weights - polished and nickel-plated brass or polished stainless steel, milligram weights - aluminium 1 mg - 5 mg / German silver 10 mg - 500 mg
- **Box material:** Lined wood. Milligram weights 1 mg - 500 mg in removable plastic box



Weight set		DKD certificate		Package price	
KERN		KERN		KERN	
Polished brass and nickel-plated					
328-22	1 mg - 500 mg	962-450		328-221-600	
323-62	1 mg - 50 g	962-401		323-621-600	
323-63	1 mg - 100 g	962-402		323-631-600	
323-64	1 mg - 200 g	962-403		323-641-600	
323-65	1 mg - 500 g	962-404		323-651-600	
323-66	1 mg - 1 kg	962-405		323-661-600	
323-67	1 mg - 2 kg	962-406		323-671-600	
323-68	1 mg - 5 kg	962-407		323-681-600	
323-69	1 mg - 10 kg	962-408		323-691-600	
324-62	1 g - 50 g	962-415		324-621-600	
324-63	1 g - 100 g	962-416		324-631-600	
324-64	1 g - 200 g	962-417		324-641-600	
324-65	1 g - 500 g	962-418		324-651-600	
324-66	1 g - 1 kg	962-419		324-661-600	
324-67	1 g - 2 kg	962-420		324-671-600	
324-68	1 g - 5 kg	962-421		324-681-600	
324-69	1 g - 10 kg	962-422		324-691-600	
Polished stainless steel					
323-02	1 mg - 50 g	962-401		323-021-600	
323-03	1 mg - 100 g	962-402		323-031-600	
323-04	1 mg - 200 g	962-403		323-041-600	
323-05	1 mg - 500 g	962-404		323-051-600	
323-06	1 mg - 1 kg	962-405		323-061-600	
323-07	1 mg - 2 kg	962-406		323-071-600	
323-08	1 mg - 5 kg	962-407		323-081-600	
323-09	1 mg - 10 kg	962-408		323-091-600	
324-02	1 g - 50 g	962-415		324-021-600	
324-03	1 g - 100 g	962-416		324-031-600	
324-04	1 g - 200 g	962-417		324-041-600	
324-05	1 g - 500 g	962-418		324-051-600	
324-06	1 g - 1 kg	962-419		324-061-600	
324-07	1 g - 2 kg	962-420		324-071-600	
324-08	1 g - 5 kg	962-421		324-081-600	
324-09	1 g - 10 kg	962-422		324-091-600	



You can make up your own individual weight set yourself:

It contains only the weights which you need for testing purposes. KERN will make your own personal box out of plastic, wood or aluminium. For more details on this, please see page 152.



Test weights CLASS F2

Milligram weights, flat polygonal sheet, aluminium/German silver

- Test weight material: Aluminium 1 mg – 5 mg/German silver 10 mg – 500 mg
- Container material: Lined plastic



Milligram weight			+	Container		+	DKD certificate		=	Package price	
KERN		Tol ±mg		KERN			KERN			KERN	
338-01	1 mg	0,06		347-009-400			962-451			338-014-600	
338-02	2 mg	0,06		347-009-400			962-452			338-024-600	
338-03	5 mg	0,06		347-009-400			962-453			338-034-600	
338-04	10 mg	0,08		347-009-400			962-454			338-044-600	
338-05	20 mg	0,10		347-009-400			962-455			338-054-600	
338-06	50 mg	0,12		347-009-400			962-456			338-064-600	
338-07	100 mg	0,16		347-009-400			962-457			338-074-600	
338-08	200 mg	0,20		347-009-400			962-458			338-084-600	
338-09	500 mg	0,25		347-009-400			962-459			338-094-600	

Individual weights, cylindrical shape, finely turned stainless steel

- Test weight material: Finely turned stainless steel
- Container material: Lined plastic or wooden box (337-150-200 and 337-160-200)



Individual weight			+	Container		+	DKD certificate		=	Package price	
KERN		Tol ±mg		KERN			KERN			KERN	
337-01	1 g	0,3		347-030-400			962-431			337-014-600	
337-02	2 g	0,4		347-030-400			962-432			337-024-600	
337-03	5 g	0,5		347-030-400			962-433			337-034-600	
337-04	10 g	0,6		347-050-400			962-434			337-044-600	
337-05	20 g	0,8		347-050-400			962-435			337-054-600	
337-06	50 g	1,0		347-070-400			962-436			337-064-600	
337-07	100 g	1,6		347-070-400			962-437			337-074-600	
337-08	200 g	3,0		347-080-400			962-438			337-084-600	
337-09	500 g	8,0		347-090-400			962-439			337-094-600	
337-11	1 kg	16		347-110-400			962-441			337-114-600	
337-12	2 kg	30		347-120-400			962-442			337-124-600	
337-13	5 kg	80		347-130-400			962-443			337-134-600	
337-14	10 kg	160		347-140-400			962-444			337-144-600	
337-15	20 kg	300		337-150-200			962-445			337-152-600	
337-16	50 kg	800		337-160-200			962-446			337-162-600	



Alternative to plastic container:

Wooden boxes for individual weights. For more details on this, please see page 151.

Test weights, stainless steel, stackable



- Test weight material: Stainless steel, finely turned

Test weight				+	DKD certificate	
KERN		Tol ±mg	Dim. Ø x H		KERN	
337-141	10 kg	160	137 x 132 mm		962-444	
337-151	20 kg	300	137 x 217 mm		962-445	
337-161	50 kg	800	198 x 250 mm		962-446	

CLASS F2

Weight sets, cylindrical shape, finely turned stainless steel

- **Test weight material:** Individual weights - finely turned stainless steel, milligram weights - aluminium 1 mg - 5 mg / German silver 10 mg - 500 mg
- **Case material:** Lined plastic. Milligram weights 1 mg - 500 mg in removable plastic box



Weight set		+ DKD certificate		=	Package price	
KERN		KERN			KERN	
338-22	1 mg - 500 mg	962-450			338-224-600	
333-024	1 mg - 50 g	962-401			333-024-600	
333-034	1 mg - 100 g	962-402			333-034-600	
333-044	1 mg - 200 g	962-403			333-044-600	
333-054	1 mg - 500 g	962-404			333-054-600	
333-064	1 mg - 1 kg	962-405			333-064-600	
333-074	1 mg - 2 kg	962-406			333-074-600	
333-084	1 mg - 5 kg	962-407			333-084-600	
334-024	1 g - 50 g	962-415			334-024-600	
334-034	1 g - 100 g	962-416			334-034-600	
334-044	1 g - 200 g	962-417			334-044-600	
334-054	1 g - 500 g	962-418			334-054-600	
334-064	1 g - 1 kg	962-419			334-064-600	
334-074	1 g - 2 kg	962-420			334-074-600	
334-084	1 g - 5 kg	962-421			334-084-600	

Weight sets, cylindrical shape, finely turned stainless steel

- **Test weight material:** Individual weights - finely turned stainless steel, milligram weights - aluminium 1 mg - 5 mg / German silver 10 mg - 500 mg
- **Box material:** Wood



Weight set		+ DKD certificate		=	Package price	
KERN		KERN			KERN	
338-22	1 mg - 500 mg	962-450			338-224-600	
333-02	1 mg - 50 g	962-401			333-022-600	
333-03	1 mg - 100 g	962-402			333-032-600	
333-04	1 mg - 200 g	962-403			333-042-600	
333-05	1 mg - 500 g	962-404			333-052-600	
333-06	1 mg - 1 kg	962-405			333-062-600	
333-07	1 mg - 2 kg	962-406			333-072-600	
333-08	1 mg - 5 kg	962-407			333-082-600	
333-09	1 mg - 10 kg	962-408			333-092-600	
334-02	1 g - 50 g	962-415			334-022-600	
334-03	1 g - 100 g	962-416			334-032-600	
334-04	1 g - 200 g	962-417			334-042-600	
334-05	1 g - 500 g	962-418			334-052-600	
334-06	1 g - 1 kg	962-419			334-062-600	
334-07	1 g - 2 kg	962-420			334-072-600	
334-08	1 g - 5 kg	962-421			334-082-600	
334-09	1 g - 10 kg	962-422			334-092-600	



You can make up your own individual weight set yourself:

It contains only the weights which you need for testing purposes. KERN will make your own personal box out of plastic, wood or aluminium. For more details on this, please see page 152.

Test weights CLASS M1

Milligram weights, flat polygonal sheet, aluminium/German silver

- Test weight material: Aluminium 1 mg – 5 mg/German silver 10 mg – 500 mg
- Container material: Lined plastic



Milligram weight			+	Container		+	DKD certificate		=	Package price	
KERN		Tol ±mg		KERN			KERN			KERN	
348-01	1 mg	0,20		347-009-400			962-651			348-014-600	
348-02	2 mg	0,20		347-009-400			962-652			348-024-600	
348-03	5 mg	0,20		347-009-400			962-653			348-034-600	
348-04	10 mg	0,25		347-009-400			962-654			348-044-600	
348-05	20 mg	0,30		347-009-400			962-655			348-054-600	
348-06	50 mg	0,40		347-009-400			962-656			348-064-600	
348-07	100 mg	0,50		347-009-400			962-657			348-074-600	
348-08	200 mg	0,60		347-009-400			962-658			348-084-600	
348-09	500 mg	0,80		347-009-400			962-659			348-094-600	

Individual weights, cylindrical shape, finely turned brass or finely turned stainless steel

- Test weight material: Individual weights - finely turned brass or finely turned stainless steel
- Container material: Lined plastic



Individual weight			+	Container		+	DKD certificate		=	Package price	
KERN		Tol ±mg		KERN			KERN			KERN	
Finely turned brass											
347-41	1 g	1,0		347-030-400			962-631			347-414-600	
347-42	2 g	1,2		347-030-400			962-632			347-424-600	
347-43	5 g	1,6		347-030-400			962-633			347-434-600	
347-44	10 g	2,0		347-050-400			962-634			347-444-600	
347-45	20 g	2,5		347-050-400			962-635			347-454-600	
347-46	50 g	3,0		347-070-400			962-636			347-464-600	
347-47	100 g	5,0		347-070-400			962-637			347-474-600	
347-48	200 g	10		347-080-400			962-638			347-484-600	
347-49	500 g	25		347-090-400			962-639			347-494-600	
347-51	1 kg	50		347-110-400			962-641			347-514-600	
347-52	2 kg	100		347-120-400			962-642			347-524-600	
347-53	5 kg	250		347-130-400			962-643			347-534-600	
347-54	10 kg	500		347-140-400			962-644			347-544-600	
Finely turned stainless steel											
347-01	1 g	1,0		347-030-400			962-631			347-014-600	
347-02	2 g	1,2		347-030-400			962-632			347-024-600	
347-03	5 g	1,6		347-030-400			962-633			347-034-600	
347-04	10 g	2,0		347-050-400			962-634			347-044-600	
347-05	20 g	2,5		347-050-400			962-635			347-054-600	
347-06	50 g	3,0		347-070-400			962-636			347-064-600	
347-07	100 g	5,0		347-070-400			962-637			347-074-600	
347-08	200 g	10		347-080-400			962-638			347-084-600	
347-09	500 g	25		347-090-400			962-639			347-094-600	
347-11	1 kg	50		347-110-400			962-641			347-114-600	
347-12	2 kg	100		347-120-400			962-642			347-124-600	
347-13	5 kg	250		347-130-400			962-643			347-134-600	
347-14	10 kg	500		347-140-400			962-644			347-144-600	

Test weights, stainless steel, stackable



- Test weight material: Stainless steel, finely turned

Test weight				+	DKD certificate	
KERN		Tol ±g	Dim. Ø x H		KERN	
347-141	10 kg	0,50	137 x 132 mm		962-644	
347-151	20 kg	1,00	137 x 217 mm		962-645	
347-161	50 kg	2,50	198 x 250 mm		962-646	

CLASS M1

Weight sets, cylindrical shape, finely turned brass or finely turned stainless steel

- **Test weight material:** Individual weights - finely turned brass or finely turned stainless steel, milligram weights - aluminium/German silver
- **Case material:** Lined plastic. Milligram weights 1 mg - 500 mg in a removable plastic box



Weight set		DKD certificate		Package price	
		+		=	
KERN		KERN		KERN	
Finely turned brass					
348-22	1 mg - 500 mg	962-650		348-224-600	
343-424	1 mg - 50 g	962-601		343-424-600	
343-434	1 mg - 100 g	962-602		343-434-600	
343-444	1 mg - 200 g	962-603		343-444-600	
343-454	1 mg - 500 g	962-604		343-454-600	
343-464	1 mg - 1 kg	962-605		343-464-600	
343-474	1 mg - 2 kg	962-606		343-474-600	
343-484	1 mg - 5 kg	962-607		343-484-600	
344-424	1 g - 50 g	962-615		344-424-600	
344-434	1 g - 100 g	962-616		344-434-600	
344-444	1 g - 200 g	962-617		344-444-600	
344-454	1 g - 500 g	962-618		344-454-600	
344-464	1 g - 1 kg	962-619		344-464-600	
344-474	1 g - 2 kg	962-620		344-474-600	
344-484	1 g - 5 kg	962-621		344-484-600	
Finely turned stainless steel					
343-024	1 mg - 50 g	962-601		343-024-600	
343-034	1 mg - 100 g	962-602		343-034-600	
343-044	1 mg - 200 g	962-603		343-044-600	
343-054	1 mg - 500 g	962-604		343-054-600	
343-064	1 mg - 1 kg	962-605		343-064-600	
343-074	1 mg - 2 kg	962-606		343-074-600	
343-084	1 mg - 5 kg	962-607		343-084-600	
344-024	1 g - 50 g	962-615		344-024-600	
344-034	1 g - 100 g	962-616		344-034-600	
344-044	1 g - 200 g	962-617		344-044-600	
344-054	1 g - 500 g	962-618		344-054-600	
344-064	1 g - 1 kg	962-619		344-064-600	
344-074	1 g - 2 kg	962-620		344-074-600	
344-084	1 g - 5 kg	962-621		344-084-600	

Weight sets, cylindrical shape, finely turned brass or finely turned stainless steel

- **Test weight material:** Individual weights - finely turned brass or finely turned stainless steel, milligram weights - aluminium 1 mg - 5 mg / German silver 10 mg - 500 mg
- **Box material:** Wood



Weight set		DKD certificate		Package price	
		+		=	
KERN		KERN		KERN	
Finely turned brass					
348-22	1 mg - 500 mg	962-650		348-224-600	
343-42	1 mg - 50 g	962-601		343-422-600	
343-43	1 mg - 100 g	962-602		343-432-600	
343-44	1 mg - 200 g	962-603		343-442-600	
343-45	1 mg - 500 g	962-604		343-452-600	
343-46	1 mg - 1 kg	962-605		343-462-600	
343-47	1 mg - 2 kg	962-606		343-472-600	
343-48	1 mg - 5 kg	962-607		343-482-600	
343-49	1 mg - 10 kg	962-608		343-492-600	
344-42	1 g - 50 g	962-615		344-422-600	
344-43	1 g - 100 g	962-616		344-432-600	
344-44	1 g - 200 g	962-617		344-442-600	
344-45	1 g - 500 g	962-618		344-452-600	
344-46	1 g - 1 kg	962-619		344-462-600	
344-47	1 g - 2 kg	962-620		344-472-600	
344-48	1 g - 5 kg	962-621		344-482-600	
344-49	1 g - 10 kg	962-622		344-492-600	

CLASS M1

Continuation of weight sets, cylindrical shape, finely turned brass or finely turned stainless steel



Weight set		+ DKD certificate		= Package price	
KERN		KERN		KERN	
343-02	1 mg - 50 g	962-601		343-022-600	
343-03	1 mg - 100g	962-602		343-032-600	
343-04	1 mg - 200 g	962-603		343-042-600	
343-05	1 mg - 500 g	962-604		343-052-600	
343-06	1 mg - 1 kg	962-605		343-062-600	
343-07	1 mg - 2 kg	962-606		343-072-600	
343-08	1 mg - 5 kg	962-607		343-082-600	
343-09	1 mg - 10 kg	962-608		343-092-600	
344-02	1 g - 50 g	962-615		344-022-600	
344-03	1 g - 100 g	962-616		344-032-600	
344-04	1 g - 200 g	962-617		344-042-600	
344-05	1 g - 500 g	962-618		344-052-600	
344-06	1 g - 1 kg	962-619		344-062-600	
344-07	1 g - 2 kg	962-620		344-072-600	
344-08	1 g - 5 kg	962-621		344-082-600	
344-09	1 g - 10 kg	962-622		344-092-600	



You can make up your own individual weight set yourself:
It contains only the weights which you need for testing purposes.
KERN will make your own personal box out of plastic, wood or aluminium For more details on this, please see page 152.

Newton weights (N)

All hook and slotted weights as well as beam bars are available with N adjustment according to M1 tolerances.
We need to know the location of use and post code.

DKD-calibration certificate for N weights: identical to DKD prices for individual weights M1

Hook weights, finely turned brass

- Test weight material: Finely turned brass
- Container material: Lined plastic



Hook weight			+ Container		+ DKD certificate		= Package price	
KERN	Tol	±mg	KERN		KERN		KERN	
347-416	1 g	1,0	347-030-400		962-631		347-4164-600	
347-426	2 g	1,2	347-030-400		962-632		347-4264-600	
347-436	5 g	1,6	347-030-400		962-633		347-4364-600	
347-446	10 g	2,0	347-050-400		962-634		347-4464-600	
347-456	20 g	2,5	347-050-400		962-635		347-4564-600	
347-466	50 g	3,0	347-070-400		962-636		347-4664-600	
347-476	100 g	5	347-090-400		962-637		347-4764-600	
347-486	200 g	10	347-090-400		962-638		347-4864-600	
347-496	500 g	25	347-110-400		962-639		347-4964-600	
347-516	1 kg	50	347-120-400		962-641		347-5164-600	
347-526	2 kg	100	347-130-400		962-642		347-5264-600	
347-536	5 kg	250	347-140-400		962-643		347-5364-600	
347-546	10 kg	500	-		962-644		-	

Test weights CLASS M1

Slotted weights, finely turned brass

- Test weight material: Finely turned brass
- Container material: Lined plastic



Slotted weight			+	Container		+	DKD certificate		=	Package price	
KERN		Tol ±mg		KERN			KERN			KERN	
347-415	1 g	1,0		347-030-400			962-631			347-4154-600	
347-425	2 g	1,2		347-030-400			962-632			347-4254-600	
347-435	5 g	1,6		347-030-400			962-633			347-4354-600	
347-445	10 g	2,0		347-030-400			962-634			347-4454-600	
347-455	20 g	2,5		347-080-400			962-635			347-4554-600	
347-465	50 g	3,0		347-080-400			962-636			347-4654-600	
347-475	100 g	5		347-090-400			962-637			347-4754-600	
347-485	200 g	10		347-090-400			962-638			347-4854-600	
347-495	500 g	25		347-110-400			962-639			347-4954-600	
347-515	1 kg	50		347-130-400			962-641			347-5154-600	
347-525	2 kg	100		347-130-400			962-642			347-5254-600	
347-535	5 kg	250		347-140-400			962-643			347-5354-600	
347-545	10 kg	500		347-140-400			962-644			347-5454-600	

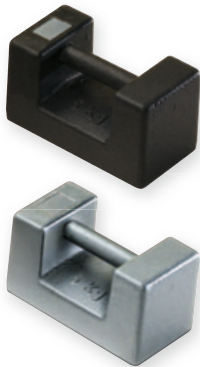
Beam bars, finely turned brass, for fixing slotted weights



- Carrier bar material: Brass, aluminium (347-445-100)

Carrier bar				+	DKD certificate	
KERN	Size	Largest slotted weight possible	Maximum total load		KERN	
347-445-100	10 g	100 g	200 g		962-634	
347-475-100	100 g	1 kg	2 kg		962-637	
347-495-100	500 g	10 kg	20 kg		962-639	
347-515-100	1000 g	10 kg	40 kg		962-641	

Rectangular weights, lacquered cast iron/stainless steel



- Test weight material: Lacquered cast iron/stainless steel (in OIML classes F1 and F2 on request)

Rectangular weight			+	DKD certificate		=	Package price	
KERN		Tol ±g		KERN			KERN	
Lacquered cast iron								
346-86	5 kg	0,25		962-643			346-860-600	
346-87	10 kg	0,50		962-644			346-870-600	
346-88	20 kg	1,00		962-645			346-880-600	
346-89	50 kg	2,50		962-646			346-890-600	
Stainless steel								
346-06	5 kg	0,25		962-643			346-060-600	
346-07	10 kg	0,50		962-644			346-070-600	
346-08	20 kg	1,00		962-645			346-080-600	
346-09	50 kg	2,50		962-646			346-090-600	

Heavy duty weights, cast iron, stackable. Designed to be lifted with forklift trucks or cranes.

- Test weight material: Lacquered cast iron



Heavy duty weight				+	DKD certificate	
KERN		Tol ±g	Dim. W x D x H		KERN	
346-81	100 kg	5	340 x 225 x 280 mm		962-691	
346-82	200 kg	10	465 x 340 x 291 mm		962-692	
346-83	500 kg	25	750 x 500 x 314 mm		962-693	
346-84	1000 kg	50	750 x 500 x 500 mm		962-694	
346-85	2000 kg	100	1000 x 750 x 500 mm		962-695	

CLASS M2

Individual weights, cylindrical shape, finely turned brass

- Test weight material: Finely turned brass
- Container material: Lined plastic



Individual weight			+	Container		+	DKD certificate		=	Package price	
KERN		Tol ±mg		KERN			KERN			KERN	
357-41	1 g	3		347-030-400			962-631			357-414-600	
357-42	2 g	4		347-030-400			962-632			357-424-600	
357-43	5 g	5		347-030-400			962-633			357-434-600	
357-44	10 g	6		347-050-400			962-634			357-444-600	
357-45	20 g	8		347-050-400			962-635			357-454-600	
357-46	50 g	10		347-070-400			962-636			357-464-600	
357-47	100 g	16		347-070-400			962-637			357-474-600	
357-48	200 g	30		347-080-400			962-638			357-484-600	
357-49	500 g	80		347-090-400			962-639			357-494-600	
357-51	1 kg	160		347-110-400			962-641			357-514-600	
357-52	2 kg	300		347-120-400			962-642			357-524-600	
357-53	5 kg	800		347-130-400			962-643			357-534-600	
357-54	10 kg	1600		347-140-400			962-644			357-544-600	



Alternative to plastic container:

Wooden boxes for individual weights. For more details on this, please see page 151.

Rectangular weights, lacquered cast iron



- Test weight material: Lacquered cast iron

Rectangular weight			+	DKD certificate		=	Package price	
KERN		Tol ±g		KERN			KERN	
356-86	5 kg	0,8		962-643			356-860-600	
356-87	10 kg	1,6		962-644			356-870-600	
356-88	20 kg	3,0		962-645			356-880-600	
356-89	50 kg	8,0		962-646			356-890-600	

Weight sets, cylindrical shape, finely turned brass



- Test weight material: Finely turned brass
- Box material: Wooden box

Weight set			+	DKD certificate		=	Package price	
KERN				KERN			KERN	
354-42	1 g - 50 g			962-615			354-422-600	
354-43	1 g - 100 g			962-616			354-432-600	
354-44	1 g - 200 g			962-617			354-442-600	
354-45	1 g - 500 g			962-618			354-452-600	
354-46	1 g - 1 kg			962-619			354-462-600	
354-47	1 g - 2 kg			962-620			354-472-600	
354-48	1 g - 5 kg			962-621			354-482-600	
354-49	1 g - 10 kg			962-622			354-492-600	

Test weights CLASS M3

Individual weights, cylindrical shape, finely turned brass

- Test weight material: Finely turned brass
- Container material: Lined plastic



Individual weight			+	Container		+	DKD certificate		=	Package price	
KERN		Tol ±mg		KERN			KERN			KERN	
367-41	1 g	10		347-030-400			962-631			367-414-600	
367-42	2 g	12		347-030-400			962-632			367-424-600	
367-43	5 g	16		347-030-400			962-633			367-434-600	
367-44	10 g	20		347-050-400			962-634			367-444-600	
367-45	20 g	25		347-050-400			962-635			367-454-600	
367-46	50 g	30		347-070-400			962-636			367-464-600	
367-47	100 g	50		347-070-400			962-637			367-474-600	
367-48	200 g	100		347-080-400			962-638			367-484-600	
367-49	500 g	250		347-090-400			962-639			367-494-600	
367-51	1 kg	500		347-110-400			962-641			367-514-600	
367-52	2 kg	1000		347-120-400			962-642			367-524-600	

Individual weights, cylindrical, lacquered cast iron

- Test weight material: Lacquered cast iron. 20 kg and 50 kg with bracket



Individual weight			+	DKD certificate		=	Package price	
KERN		Tol ±g		KERN			KERN	
366-91	100 g	0,05		962-637			366-910-600	
366-92	200 g	0,10		962-638			366-920-600	
366-93	500 g	0,25		962-639			366-930-600	
366-94	1 kg	0,50		962-641			366-940-600	
366-95	2 kg	1,0		962-642			366-950-600	
366-96	5 kg	2,5		962-643			366-960-600	
366-97	10 kg	5		962-644			366-970-600	
366-98	20 kg	10		962-645			366-980-600	
366-99	50 kg	25		962-646			366-990-600	

Rectangular weights, lacquered cast iron



- Test weight material: Lacquered cast iron

Rectangular weight			+	DKD certificate		=	Package price	
KERN		Tol ±g		KERN			KERN	
366-86	5 kg	2,5		962-643			366-860-600	
366-87	10 kg	5		962-644			366-870-600	
366-88	20 kg	10		962-645			366-880-600	
366-89	50 kg	25		962-646			366-890-600	

Weight sets, cylindrical, lacquered brass and cast iron

- Test weight material: Brass lacquered and cast iron
- Container material: Wooden block



Weight set			+	DKD certificate		=	Package price	
KERN				KERN			KERN	
362-96	1 g - 1 kg			962-619			362-963-600	
362-97	1 g - 2 kg			962-620			362-973-600	
362-98	1 g - 5 kg			962-621			362-983-600	
362-99	1 g - 10 kg			962-622			362-993-600	

Test weights-accessories

Tweezers, weight forks, weight grips, gloves, dusting brush

- Test weight material: Finely turned brass
- Container material: Lined plastic



Tweezers to be able to safely grip small test weights

For weights of the class	For weights	KERN	Length	Version
E1 - F1	1 mg - 200 g	315-243	105 mm	1 Stainless steel with silicone-coated tips
E1 - F1	500 g - 2 kg	315-245	250 mm	1 Stainless steel with silicone-coated tips
F2 - M3	1 mg - 200 g	335-240	100 mm	2 Stainless steel
E1 - M1	1 mg - 200 g	315-242	100 mm	3 Plastic



Weight fork to be able to better grip the individual, cylindrical weights

KERN	For weights
315-253	2 kg
315-254	5 kg



Weight carrying handle to be able to safely grip heavy, individual cylindrical weights

KERN	For weights
315-264	10 kg
315-265	20 kg
315-266	50 kg



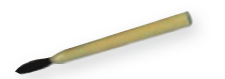
Gloves, cotton, 1 pair. Help to protect the test weights when being used daily, from grease from fingers, damp etc.

KERN
317-280



Gloves, leather/cotton, 1 pair. Help to protect the test weights when being used daily, from grease from fingers, damp etc.

KERN
317-290



Dusting brush to clean the weights

KERN
318-270

Wooden boxes for individual weights

- Box material: Lined wood.
Suitable for individual weights
KERN No. 307, 316, 317, 326, 327, 329

Wooden box
for individual weights E1 - F1

For weights	KERN
mg	338-090-200
1 g	317-010-100
2 g	317-020-100
5 g	317-030-100
10 g	317-040-100
20 g	317-050-100
50 g	317-060-100
100 g	317-070-100
200 g	317-080-100
500 g	317-090-100
1 kg	317-110-100
2 kg	317-120-100
5 kg	317-130-100
10 kg	317-140-100
20 kg	317-150-100
50 kg	317-160-100



- Box material: Wood.
Suitable for individual weights
KERN No. 337, 347, 357, 367

Wooden box
for individual weights F2 - M3

For weights	KERN
mg	338-090-200
1 g	337-010-200
2 g	337-020-200
5 g	337-030-200
10 g	337-040-200
20 g	337-050-200
50 g	337-060-200
100 g	337-070-200
200 g	337-080-200
500 g	337-090-200
1 kg	337-110-200
2 kg	337-120-200
5 kg	337-130-200
10 kg	337-140-200
20 kg	337-150-200
50 kg	337-160-200



Made specially for you

Cases/boxes for individual weight sets

Individual weight sets:

You can make up your own „tailor-made“ individual weight sets yourself.

KERN will make your own personal wooden box / plastic carrying case. The largest individual weight which will fit is given in the table.

Sample order:

Your individual weight set:

1 x 50 g, 2 x 100 g, 1 x 500 g, 2 x 1 kg, 1 x 2 kg.

The correct individual box is

KERN No. 313-080-400 (plastic) or

KERN No. 315-070-100 (wood).



Plastic case for weight classes E1, E2, F, M, not appropriate for cast iron weights	
KERN	For weights
313-050-400	≤ 500 g
313-080-400	≤ 5 kg



Wooden box for weight classes E1, E2 and F1	
KERN	For weights
315-040-100	≤ 200 g
315-060-100	≤ 1 kg
315-070-100	≤ 2 kg
315-080-100	≤ 5 kg
315-090-100	≤ 10 kg



Wooden box for weight classes F2, M1, M2 and M3	
KERN	For weights
335-040-200	≤ 200 g
335-050-200	≤ 500 g
335-060-200	≤ 1 kg
335-070-200	≤ 2 kg
335-080-200	≤ 5 kg
335-090-200	≤ 10 kg

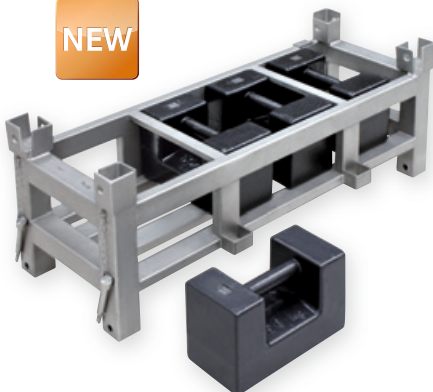


Aluminium case

for safe storage and transportation under harsh industrial conditions. Ideal for test weights of accuracy classes E2–M3. Please ask for details.

Weight carriers for rectangular weights or other test weights

NEW



Individual weight carriers for testing high capacity floor scales, pallet scales, pallet truck scales, crane scales, etc. This can also be used for storing the weights. This means the weight container and the weights can be placed on the balance in one go, saving you time and money.

The weight container can be calibrated to OIML accuracy classes M1-M3.

On request, KERN will make you a „tailor-made“ weight carrier to your specifications.